

FCPF/REDD/S/QCB-21

- Development of R-Package and Assessment of REDD + Readiness In Nepal
- Government of Nepal REDD Implementation Center
- Oy Arbonaut Ltd. Finland
- Green Governance Nepal
- Kathmandu Nepal,
- February 18, 2015

Workshop and Assignment Objectives

- Overall Objective: To Conduct a thorough Assessment of Nepal's Progress on REDD + Readiness, using the R-Package Assessment Framework
- Workshop Objective: Explain R Package Process, Timeline and obtain inputs from Government of Nepal and Civil Society Partners

What is an “R Package” (Readiness Assessment)?

- Readiness Assessment Package provides a common Framework on core readiness activities:
- It is a thorough self examination by REDD Country stakeholders,
- Takes stock progress on REDD + Readiness preparation phase and
- Assesses progress on REDD + Readiness

Contents of an R Package

- Documents a Country's Progress
- Captures Lessons Learned
- Assesses Remaining Gaps
- Identifies Activities for the way forward;
- Ultimate Objective: Transition to Implementation of Performance Based Activities (\$)

Performance Based Implementation and it's importance

- Allows verifiable assessment of Country's progress on REDD+ Readiness
- If Progress is sufficient, permits Country to apply for Performance Based REDD + Funding, and access to multi-country funded financial resources from GCF, FCPF and other funding mechanisms
- Permits long term REDD + Funding and planning

Outputs of the R Package Assessment Process

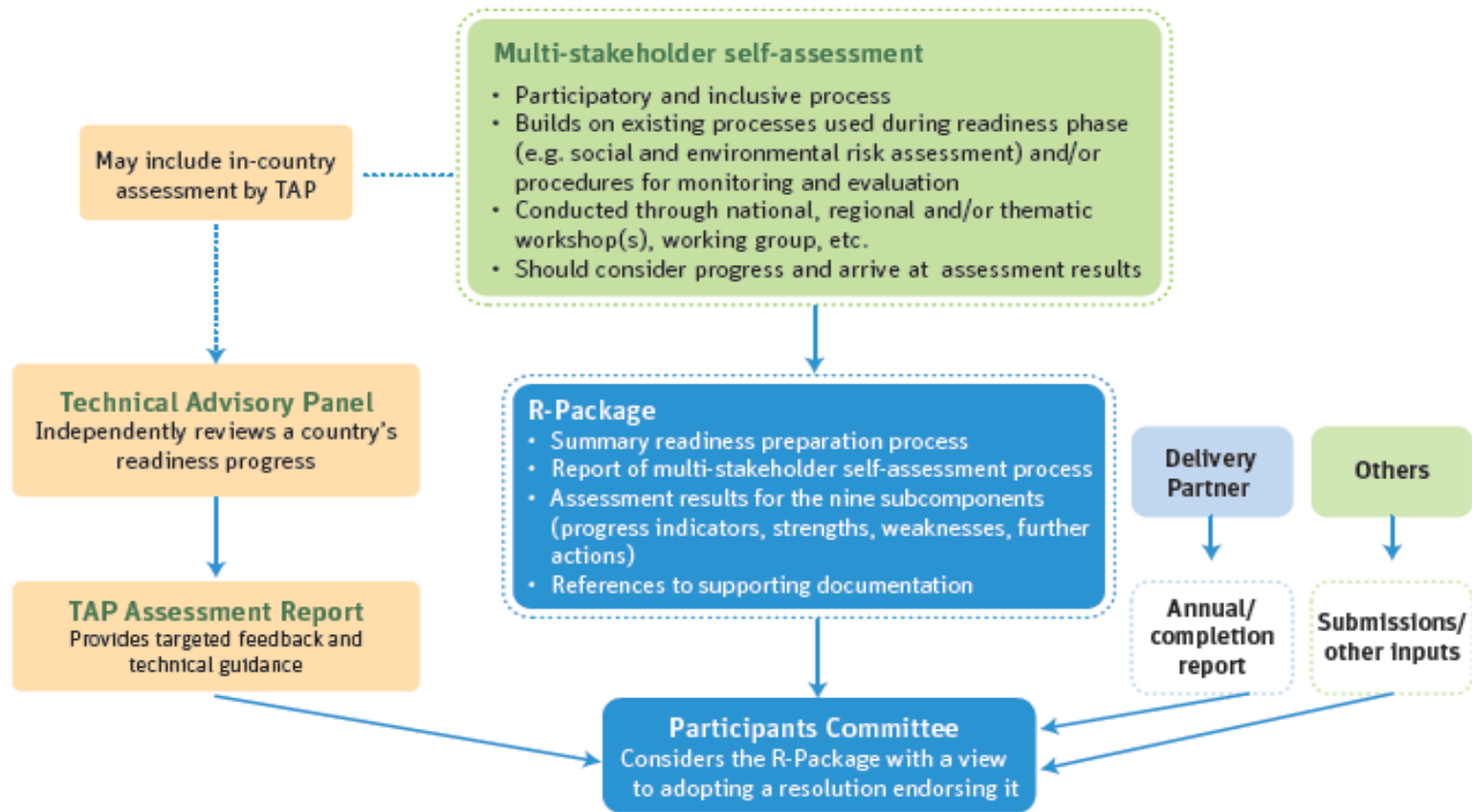
- Visual Synthesis of Overall Achievement by sub components using progress indicators (“Traffic Light”)
- Demonstrates significant areas of progress
- Identifies any areas requiring further development using standardized criteria

Detailed R Package Components

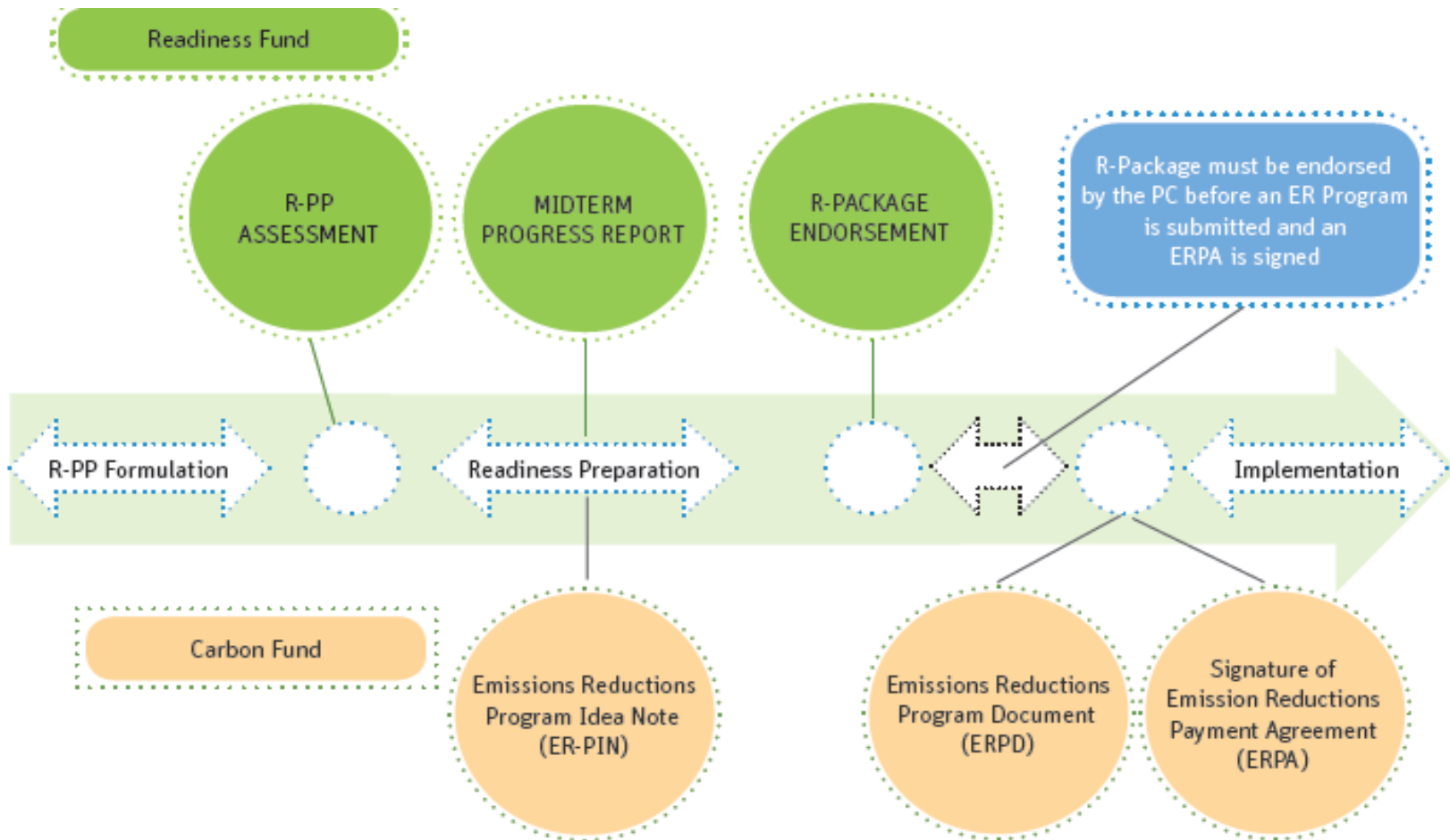
- Report of Multi-Stakeholder Self Assessment (eg Consultation) Process
- References key outputs of the REDD+ Readiness Process (eg REDD + Strategy, Reference Emission Levels, SESA Progress, etc)

Visual Representation of the R Package Assessment Process

The assessment process



R-Package and Readiness Preparation and Carbon Finance



Consultation Process

- National Level Inception Workshop
- 10 District Level Consultations
- 5 Regional Consultations
- 3 Special Interest Group Consultations
- Final National Level Workshop
- RESULT: Conclusive and Comprehensive Final report

R Package Timeline

- Feb 18, 2015: National Inception Workshop
- Feb 25-April 30, 2015: Complete 10 District, 5 Regional and 3 Special Interest Group Workshops
- May 5: Present preliminary findings and results of District, Regional and Special Interest Groups Consultations in Final National Workshop
- Present Final Comprehensive R Package Report to Government of Nepal, REDD + Implementation Center, MOFSC, Civil Society

R Package Assessment Team

- 1 International Policy Analysis Expert: Brian Peniston
- 1 National M&E Expert: Dr Rajendra K. C.
- 1 National Expert on REDD +: Dr Mohan Gurung
- Technical and Managerial Support from Oy Arbonaut and Green Governance Nepal

Assessment Team Roles and Responsibilities

- Team Leader: Overall Coordination, Final Document Write up, Review and Critique Background Documents, lead on Inception and closing workshops
- M&E Specialist: Lead on SESA, TEV, Reviews of Relevant Laws and Benefit Sharing and other assessments. Co Lead District, Regional and Special Group Consultation;
- National REDD + Expert: Lead on RPP, ER-PIN, MRV, REL, CGE Modeling, DD Drivers and other Assessments. Co-Lead District, Regional and Special Group Workshops

REDD + Team and MOFSC Capacity Building Efforts

- Team will engage REDD + Team and MOFSC staff in multiple roles, depending on their availability including:
 - A) Provide inputs on Survey and Questionnaire design including inputs from other interested parties
 - B) Resource Persons and Input Providers
 - C) “Training by doing” through active participation in R- Package process
 - D) Preferably using assigned focal person approach

Thorough Review of All Officially Received Documents

- FCPF Guidelines
- R Package Experience and Methodologies (Nepal and Other Countries)
- Nepal RPP
- Nepal ER –PIN, MRV and Reference Level reports
- SESA Report
- Drivers of Deforestation and Forest Degradation, and Total Economic Value (TEV)
- CGE Modeling
- Objective: Assess Progress and Identify any Gaps

Key R-Package Documents

- A Guide to the FCPF Readiness Assessment Framework, June 2013 FCPF: With 4 Components broken into 34 Guiding Questions;
- Component 1: Readiness Organization and Consultation (Guided Questions 1-10)
- Component 2: Redd + Strategy Preparation (Guided Questions 11-25)
- Component 3: Reference Emission Level/Reference levels (Guided Questions 26-28)
- Component 4: Monitoring System for Forests and Safeguards (Guided Questions 29-34)

Specific Considerations for Nepal

- Young Democracy emerging from lengthy conflict
- Constitution still under Development, affecting definitions of rights, responsibilities etc
- On going Discussions on Federal Nepal, with implications for Forest/Carbon Use Rights (Decentralized Verses Centralized Structures)
- Increasingly Active, Engaged and Informed Civil Society Organizations
- Large Diversity in Forest types, Use Rights and Management Structures within Nepal

Closing Remarks for this Session

- Please hold questions for the end
- Introducing National Experts Dr Rajendra KC who will lead next detailed presentation,
- THANK YOU for your attention and inputs

“Proposed” Consultation Districts

- Siraha
- Kailali
- Dang
- Chitwan
- Kavre
- Gorkha
- Dolakha
- Bajhang
- Jumla
- Sankuwasabha

“Proposed” Regional Workshops

- Central Region (Hetauda)
- Eastern Region (Biratnagar)
- Western Region (Pokara)
- Mid Western Region (Surkhet/Nepalgung)
- Far Western Region (Dipal/Dhangadi)

Proposed Special Interest Group Workshops (Illustrative)

- Nepali Civil Society/Professional organizations (FECOFUN, NEFUG, NAFTA, NFA, NAFAN, ACOFUN, + others)
- Nepali Indigenous, Ethnic and Women's Organizations (NEFIN, DANAR, HIMAWANTI, WOCAN + others)
- International and National NGOs with experience on REDD and REDD+ implementation (WWF/Hariyo Ban, ICIMOD, ANSAB, Forest Action, MSFP, Rupantaran + others)

Details: Readiness Organization and Consultation (C 1)

- National REDD + Management Arrangements
- Consultation, Participation and Outreach

Details: REDD + Strategy Preparation (C 2)

- Assessment of Land Use, Land Use Change Drivers, Forest Law, Policy and Governance
- REDD + Strategy Options
- Implementation Framework
- Social and Environmental Impacts

Details: Reference Emission Levels/Reference Levels (C 3)

- Demonstration of Methodology
- Use of Historical data and adjusted for National Circumstances
- Technical Feasibility of methodological approach and Consistency with UNFCCC/IPCC

Details: Monitoring Systems for Forests and Safeguards (C 4)

- National Forest Monitoring System
- Information System for Multiple Benefits, Other Impacts, Governance and Safeguards